

CanningHill Piers Fact Sheet

Address	River Valley Road / Tan Tye Place / Clarke Quay
Description	<ul style="list-style-type: none"> One 48-storey residential tower (1 Clarke Quay) One 24-storey residential tower (5 Clarke Quay) Four-storey basement carpark Clubhouse, swimming pool and communal facilities located at Levels 3, 24 and 45
District	6
Number of units	696
Height	<ul style="list-style-type: none"> 180-metres (48-storey residential tower) 100-metres (24-storey residential tower)
Tenure	99-year leasehold ¹
Site area (for the entire integrated development)	139,128 sq ft
Estimated TOP date	2025
Design architect	Bjarke Ingels Group
Project architect	DP Architects Pte Ltd
Landscape architect	Ramboll Studio Dreiseitl
Project interior designer	Asylum Creative Pte Ltd

CHP UNIT MIX 19 AUG 2021

Order	Block	Unit Type	Unit Name	Number of Units	(%)	Est Unit Size (sq m)	Est Unit Size (sf)
1	1	1-BEDROOM	TYPE A1	41	14.2%	38	409
2	1	1-BEDROOM	TYPE A1(p)	2		38	409
3	5	1-BEDROOM	TYPE A2	16		41	441
4	1	1-BEDROOM	TYPE A3	40		43	463
5	5	1-BEDROOM + STUDY	TYPE AS1	20		44	474
6	1	1-BEDROOM + STUDY	TYPE AS2	7		45	484
7	1	1-BEDROOM + STUDY	TYPE AS2(p)	1		45	484
8	1	1-BEDROOM + STUDY (SF)	TYPE AS2a	34		50	538
9	1	1-BEDROOM + STUDY	TYPE AS2a(p)	1		50	538
10	5	1-BEDROOM + STUDY	TYPE AS2b	20		50	538
11	5	1-BEDROOM + STUDY	TYPE AS2c	20		50	538
12	1	1-BEDROOM + STUDY	TYPE AS3	7		45	484
13	1	1-BEDROOM + STUDY	TYPE AS3(p)	1		45	484
14	1	1-BEDROOM + STUDY	TYPE AS3a	34		51	549
15	1	1-BEDROOM + STUDY	TYPE AS3a(p)	1	51	549	
16	1	1-BEDROOM + STUDY	TYPE AS4	2	47	506	
17	1	1-BEDROOM + STUDY	TYPE AS4(p)	1	47	506	
18	1	1-BEDROOM + STUDY	TYPE AS5	20	47	506	
19	5	1-BEDROOM + STUDY	TYPE AS6	20	47	506	
20	1	1-BEDROOM + STUDY	TYPE AS7	20	50	538	
21	5	1-BEDROOM + STUDY	TYPE AS8	20	52	560	
22	1	2-BEDROOM	TYPE B1	20	20	68	732
23	1	2-BEDROOM + ENSUITE STUDY	TYPE B1(S)	20	20	77	829
24	1	2-BEDROOM + STUDY	TYPE B51	5	68	732	
25	1	2-BEDROOM + STUDY	TYPE B51a	34	76	818	
26	1	2-BEDROOM + STUDY	TYPE B51a(p)	1	76	818	
27	1	2-BEDROOM + STUDY	TYPE B52	7	74	797	
28	1	2-BEDROOM + STUDY	TYPE B52(p)	1	74	797	
29	1	2-BEDROOM + STUDY	TYPE B52a	34	77	829	
30	1	2-BEDROOM + STUDY	TYPE B52a(p)	1	77	829	
31	5	2-BEDROOM + STUDY	TYPE B53	20	75	807	
32	5	2-BEDROOM + STUDY	TYPE B54	20	75	807	
33	5	2-BEDROOM + STUDY (SF)	TYPE B55	20	80	861	
34	5	2-BEDROOM + STUDY	TYPE B56	20	82	883	
35	1	3-BEDROOM	TYPE C1	5	83	893	
36	1	3-BEDROOM	TYPE C1a	15	88	947	
37	5	3-BEDROOM	TYPE C2	20	105	1130	
38	5	3-BEDROOM	TYPE C3	20	117	1259	
39	5	3-BEDROOM PREMIUM (SF)	TYPE CP1	20	20	122	1313
40	1	4-BEDROOM PREMIUM (SF)	TYPE DP1	20	163	1755	
41	1	4-BEDROOM PREMIUM	TYPE DP2	19	181	1948	
42	1	4-BEDROOM PREMIUM	TYPE DP2(p)	1	181	1948	
43	1	4-BEDROOM PREMIUM	TYPE DP3	19	182	1959	
44	1	4-BEDROOM PREMIUM	TYPE DP3(p)	1	182	1959	
45	1	5-BEDROOM PREMIUM	TYPE EP1	20	20	259	2788
46	1	SKY SUITE	TYPE SS1	2	267	2874	
47	1	SKY SUITE	TYPE SS2	2	4	369	3972
48	1	SUPER PENTHOUSE	TYPE PH	1	1	832	8956
				696	696	100.00%	

NOTE:
INFORMATION SUBJECT TO CHANGE WITHOUT PRIOR NOTICE

Unit Type	No. of Units	Est. Min Size (Sq ft)	Est. Max Size (Sq ft)	Unit Mix %	Unit Mix %
1-BEDROOM	99	409	463	14.2%	47%
1-BEDROOM + STUDY	229	474	560	32.9%	
2-BEDROOM	20	732	732	2.9%	29%
2-BEDROOM + ENSUITE STUDY	20	829	829	2.9%	
2-BEDROOM + STUDY	163	732	883	23.4%	
3-BEDROOM	60	893	1259	8.6%	11%
3-BEDROOM PREMIUM	20	1313	1313	2.9%	
4-BEDROOM PREMIUM	60	1755	1959	8.6%	9%
5-BEDROOM PREMIUM	20	2788	2788	2.9%	3%
SKY SUITE	4	2874	3972	0.6%	1%
SUPER PENTHOUSE	1	8956	8956	0.1%	
Total	696			100%	100%

CHP SCHEMATIC CHART 19 AUG 2021

UNIT MIX DISTRIBUTION

1 CLARKE QUAY										
1	2	3	4	5	6	7	8	9	10	11

5 CLARKE QUAY												
15	16	17	18	19	20	21	22	23	24	25	26	27

LR
48
47
46

	AS4(p)	AS3(p)	AS2(p)	BS2(p)	A1(p)	PH (#48-08)					
SS1 (#47-01)	AS4	AS3	AS2	BS2	A1	SS2 (#47-08)					
SS1 (#46-01)	AS4	AS3	AS2	BS2	A1	SS2 (#46-08)					

45
44
43
42
41
40
39
38
37
36
35
34
33
32
31
30
29
28
27
26
25

CANNINGHILL SKY									
EP1	BS1	AS3	AS2	BS2	A1	C1	B1	A3	DP1
EP1	BS1	AS3	AS2	BS2	A1	C1	B1	A3	DP1
EP1	BS1	AS3	AS2	BS2	A1	C1	B1	A3	DP1
EP1	BS1	AS3	AS2	BS2	A1	C1	B1	A3	DP1
EP1	BS1a	AS3a	AS2a	BS2a	A1	C1a	B1	A3	DP1
EP1	BS1a	AS3a	AS2a	BS2a	A1	C1a	B1	A3	DP1
EP1	BS1a	AS3a	AS2a	BS2a	A1	C1a	B1	A3	DP1
EP1	BS1a	AS3a	AS2a	BS2a	A1	C1a	B1	A3	DP1
EP1	BS1a	AS3a	AS2a	BS2a	A1	C1a	B1	A3	DP1
EP1	BS1a	AS3a	AS2a	BS2a	A1	C1a	B1	A3	DP1
EP1	BS1a	AS3a	AS2a	BS2a	A1	C1a	B1	A3	DP1
EP1	BS1a	AS3a	AS2a	BS2a	A1	C1a	B1	A3	DP1
EP1	BS1a	AS3a	AS2a	BS2a	A1	C1a	B1	A3	DP1
EP1	BS1a	AS3a	AS2a	BS2a	A1	C1a	B1	A3	DP1
EP1	BS1a	AS3a	AS2a	BS2a	A1	C1a	B1	A3	DP1
EP1	BS1a	AS3a	AS2a	BS2a	A1	C1a	B1	A3	DP1
EP1	BS1a	AS3a	AS2a	BS2a	A1	C1a	B1	A3	DP1

24
23
22
21
20
19
18
17
16
15
14
13
12
11
10
9
8
7
6
5
4
3

CANNINGHILL CLUB										
DP2(p)	BS1a(p)	AS3a(p)	AS2a(p)	BS2a(p)	A1(p)	B1(S)	AS5	A3	AS7	DP3(p)
DP2	BS1a	AS3a	AS2a	BS2a	A1	B1(S)	AS5	A3	AS7	DP3
DP2	BS1a	AS3a	AS2a	BS2a	A1	B1(S)	AS5	A3	AS7	DP3
DP2	BS1a	AS3a	AS2a	BS2a	A1	B1(S)	AS5	A3	AS7	DP3
DP2	BS1a	AS3a	AS2a	BS2a	A1	B1(S)	AS5	A3	AS7	DP3
DP2	BS1a	AS3a	AS2a	BS2a	A1	B1(S)	AS5	A3	AS7	DP3
DP2	BS1a	AS3a	AS2a	BS2a	A1	B1(S)	AS5	A3	AS7	DP3
DP2	BS1a	AS3a	AS2a	BS2a	A1	B1(S)	AS5	A3	AS7	DP3
DP2	BS1a	AS3a	AS2a	BS2a	A1	B1(S)	AS5	A3	AS7	DP3
DP2	BS1a	AS3a	AS2a	BS2a	A1	B1(S)	AS5	A3	AS7	DP3
DP2	BS1a	AS3a	AS2a	BS2a	A1	B1(S)	AS5	A3	AS7	DP3
DP2	BS1a	AS3a	AS2a	BS2a	A1	B1(S)	AS5	A3	AS7	DP3
DP2	BS1a	AS3a	AS2a	BS2a	A1	B1(S)	AS5	A3	AS7	DP3
DP2	BS1a	AS3a	AS2a	BS2a	A1	B1(S)	AS5	A3	AS7	DP3
DP2	BS1a	AS3a	AS2a	BS2a	A1	B1(S)	AS5	A3	AS7	DP3
DP2	BS1a	AS3a	AS2a	BS2a	A1	B1(S)	AS5	A3	AS7	DP3

AS1	AS6	AS8	AS2c	AS2b	C3	BS5	C2	CP1	BS3	BS4	BS6	A2
AS1	AS6	AS8	AS2c	AS2b	C3	BS5	C2	CP1	BS3	BS4	BS6	A2
AS1	AS6	AS8	AS2c	AS2b	C3	BS5	C2	CP1	BS3	BS4	BS6	A2
AS1	AS6	AS8	AS2c	AS2b	C3	BS5	C2	CP1	BS3	BS4	BS6	A2
AS1	AS6	AS8	AS2c	AS2b	C3	BS5	C2	CP1	BS3	BS4	BS6	A2
AS1	AS6	AS8	AS2c	AS2b	C3	BS5	C2	CP1	BS3	BS4	BS6	A2
AS1	AS6	AS8	AS2c	AS2b	C3	BS5	C2	CP1	BS3	BS4	BS6	A2
AS1	AS6	AS8	AS2c	AS2b	C3	BS5	C2	CP1	BS3	BS4	BS6	A2
AS1	AS6	AS8	AS2c	AS2b	C3	BS5	C2	CP1	BS3	BS4	BS6	A2
AS1	AS6	AS8	AS2c	AS2b	C3	BS5	C2	CP1	BS3	BS4	BS6	A2
AS1	AS6	AS8	AS2c	AS2b	C3	BS5	C2	CP1	BS3	BS4	BS6	A2
AS1	AS6	AS8	AS2c	AS2b	C3	BS5	C2	CP1	BS3	BS4	BS6	A2
AS1	AS6	AS8	AS2c	AS2b	C3	BS5	C2	CP1	BS3	BS4	BS6	A2
AS1	AS6	AS8	AS2c	AS2b	C3	BS5	C2	CP1	BS3	BS4	BS6	A2
AS1	AS6	AS8	AS2c	AS2b	C3	BS5	C2	CP1	BS3	BS4	BS6	A2
AS1	AS6	AS8	AS2c	AS2b	C3	BS5	C2	CP1	BS3	BS4	BS6	A2
AS1	AS6	AS8	AS2c	AS2b	C3	BS5	C2	CP1	BS3	BS4	BS6	A2
AS1	AS6	AS8	AS2c	AS2b	C3	BS5	C2	CP1	BS3	BS4	BS6	A2
AS1	AS6	AS8	AS2c	AS2b	C3	BS5	C2	CP1	BS3	BS4	BS6	A2
AS1	AS6	AS8	AS2c	AS2b	C3	BS5	C2	CP1	BS3	BS4	BS6	A2
AS1	AS6	AS8	AS2c	AS2b	C3	BS5	C2	CP1	BS3	BS4	BS6	A2

CANNINGHILL GARDEN

1-BEDROOM
 2-BEDROOM
 3-BEDROOM
 4-BEDROOM PREMIUM
 SKY SUITE

1-BEDROOM + STUDY
 2-BEDROOM + ENSUITE STUDY
 3-BEDROOM PREMIUM
 5-BEDROOM PREMIUM
 SUPER PENTHOUSE

2-BEDROOM + STUDY

ABOVE INFORMATION SUBJECT TO CHANGE WITHOUT PRIOR NOTICE
FOR ACTUAL UNIT ORIENTATION AND STACKING, PLEASE REFER TO STOREY KEY PLANS

1-BEDROOM + STUDY

TYPE AS2a

50 sq m / 538 sq ft

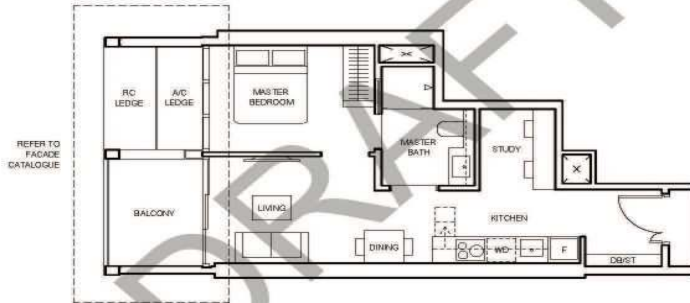
BLK 1
#04-04 to #22-04
#25-04 to #39-04

Showflat Show unit

TYPE AS2a(p)

50 sq m / 538 sq ft

BLK 1
#23-04



LEGEND (WHERE APPLICABLE)
DB Distribution Board WD Washer cum Dryer W/D Washer and Dryer F Fridge DW Dishwasher WW Walk-In Wardrobe
WC Water Closet ST Storage HS Household Shelter TB Tubboy CH Wine Chiller

Area includes air-con (A/C) ledge, balcony and void where applicable. Please refer to the keyplan for orientation. The plans are subjected to change as may be approved by relevant authorities. All floor plans are approximate measurements only and are subjected to government re-survey. The balcony shall not be enclosed unless with the approved balcony screen.

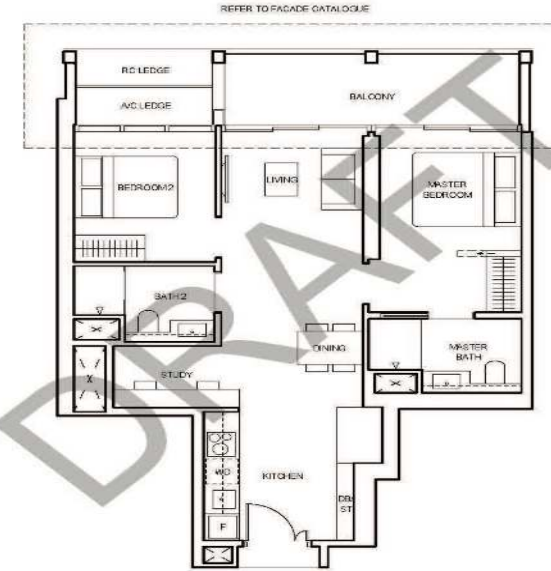
2-BEDROOM + STUDY

TYPE BS5

80 sq m / 861 sq ft

BLK 5
#04-21 to #23-21

Showflat Show unit



LEGEND (WHERE APPLICABLE)
DB Distribution Board WD Washer cum Dryer W/D Washer and Dryer F Fridge DW Dishwasher WW Walk-In Wardrobe
WC Water Closet ST Storage HS Household Shelter TB Tubboy CH Wine Chiller

Area includes air-con (A/C) ledge, balcony and void where applicable. Please refer to the keyplan for orientation. The plans are subjected to change as may be approved by relevant authorities. All floor plans are approximate measurements only and are subjected to government re-survey. The balcony shall not be enclosed unless with the approved balcony screen.

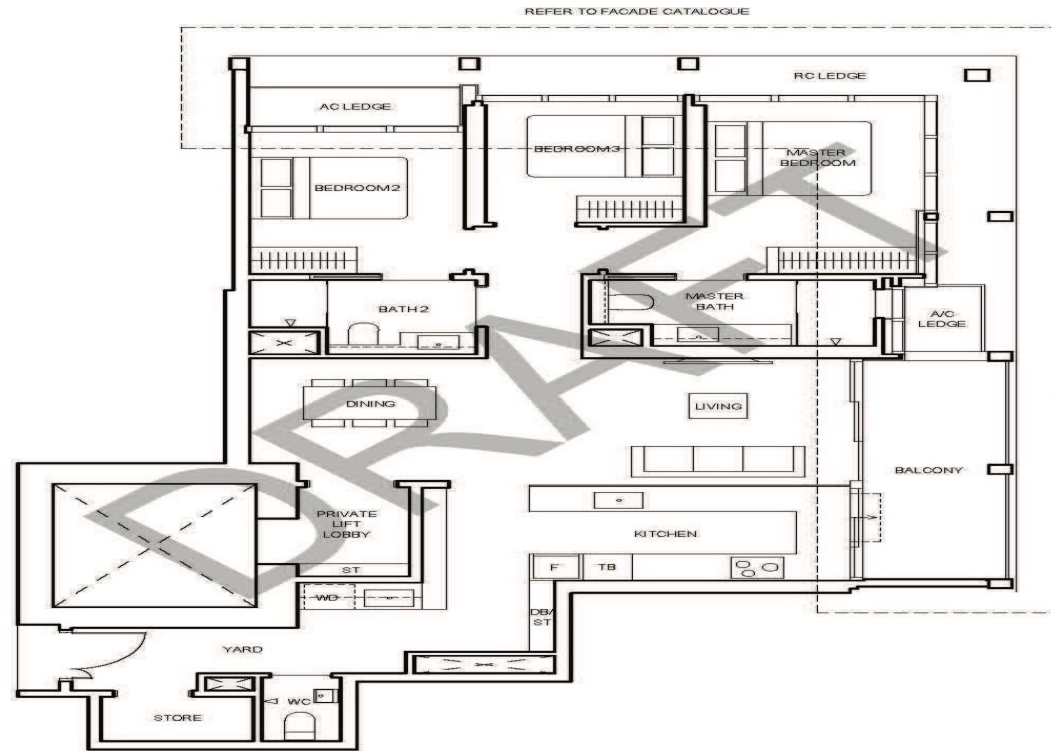
3-BEDROOM PREMIUM

TYPE CP1

122 sq m / 1313 sq ft

BLK 5
#04-23 to #23-23

Showflat Show unit



LEGEND (WHERE APPLICABLE)
DB Distribution Board **WD** Washer cum Dryer **WD** Washer and Dryer **F** Fridge **DW** Dishwasher **WIV** Walk-In Wardrobe
WC Water Closet **ST** Storage **HS** Household Shelter **TB** Tallboy **CH** Wine Chiller

Area includes air-con (a/c) ledge, balcony and void where applicable. Please refer to the keyplan for orientation. The plans are subjected to change as may be approved by relevant authorities. All floor plans are approximate measurements only and are subjected to government re-survey. The balcony shall not be enclosed unless with the approved balcony screen.

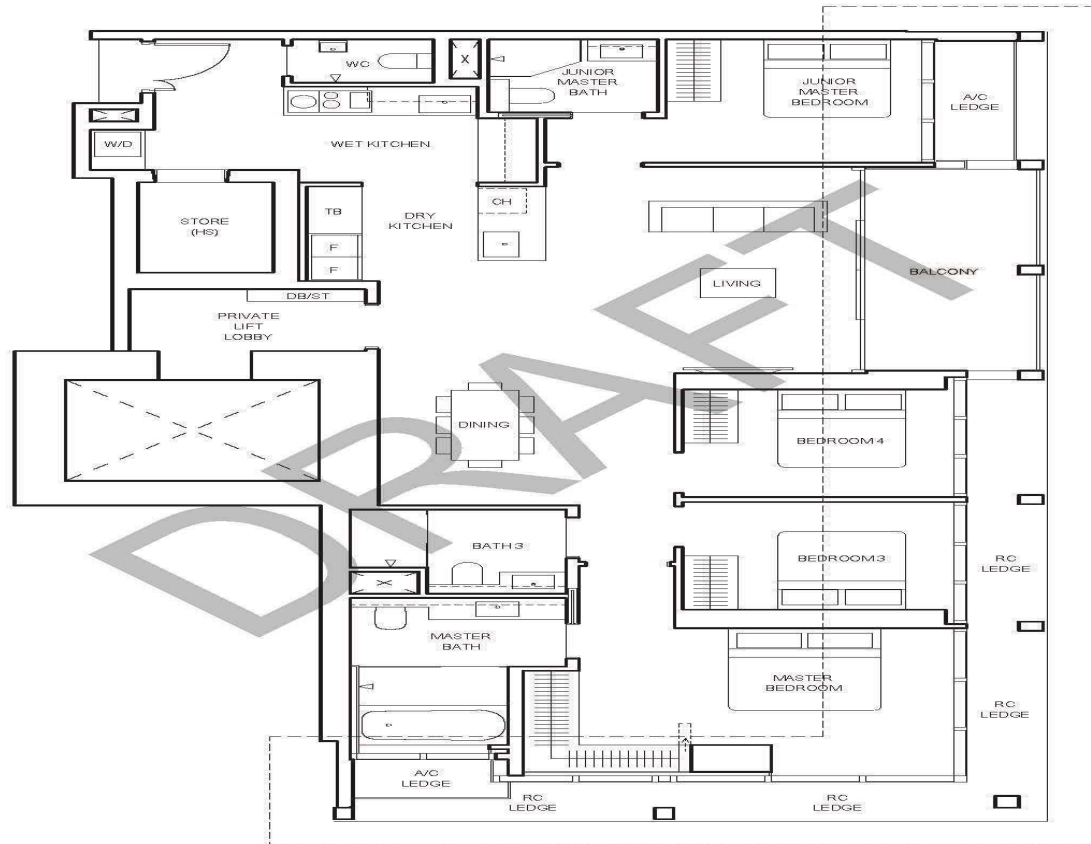
4-BEDROOM PREMIUM

Showflat Show unit

TYPE DP1

163 sq m / 1755 sq ft

BLK 1
#25-10 to #44-10



REFER TO FACADE CATALOGUE



LEGEND (WHERE APPLICABLE)
DB Distribution Board **WD** Washer cum Dryer **W/D** Washer and Dryer **F** Fridge **DW** Dishwasher **WIW** Walk-In Wardrobe
WC Water Closet **ST** Storage **HS** Household Shelter **TB** Tallboy **CH** Wine Chiller

Area includes air-con (a/c) ledge, balcony and void where applicable. Please refer to the keyplan for orientation. The plans are subjected to change as may be approved by relevant authorities. All floor plans are approximate measurements only and are subjected to government re-survey. The balcony shall not be enclosed unless with the approved balcony screen.

CANNINGHILL PIERS

	Guide Price (psf)	\$2,750	\$2,850	\$2,950	\$3,100
	Size (sqft)	Low Floor	Below 10th floor	Below 20th Floor	Below 30th Floor
1 Bedroom	409		\$1,165,650	\$1,206,550	\$1,267,900
1 Bedroom + Study	474		\$1,350,900	\$1,398,300	\$1,469,400
2 Bedroom	732		\$2,086,200	\$2,159,400	\$2,269,200
2 Bedroom + Study	829		\$2,362,650	\$2,445,550	\$2,569,900
3 Bedroom	893	\$2,455,750	\$2,545,050	\$2,634,350	\$2,768,300
3 Bedroom Premium	1313	\$3,610,750	\$3,742,050	\$3,873,350	\$4,070,300
4 Bedroom Premium	1755	\$4,826,250	\$5,001,750	\$5,177,250	\$5,440,500
5 Bedroom	2,788	\$7,667,000	\$7,945,800	\$8,224,600	\$8,642,800

Disclaimer: Price change with prior notice. This serve only as a estimated size and price guide.



More Information will be released soon!
Register with us as viewing is strictly via by
appointment basis

Showflat VIP Preview tentatively in Oct 2021